

FISHERMEN AND THEIR BOATS

By Ivan Staite

This month we feature a boat built some 42 years ago and is still as sound as the day she was built. (Who said plywood boats won't last?) "Contessa III" was built by Fleetcraft Boats of Palmerston North for the late Philip Hereford, who used it mainly for fishing on Lake Taupo. Philip and his family would frequently cross the Lake from their Motuoapa Bay base to the choice Western Bay fishing grounds, often living aboard for several days at a time. After Philip's death the boat was used by the family, until it was sold to another keen fisherman at Motuoapa. Bruce London spends most of his spare time chasing the elusive rainbow trout.

Previous Boats

Bruce has lived and fished most of his life out of Motuoapa on a small Marlborough and later a 15 foot 6



"Contessa III" tied up to the Motuoapa Wharf in 1964

inch Hartley Vivid. The 21 foot "Contessa III" was a big step up and ideally suited for fishing and cruising around the Lake.

"Contessa III" has a 7 foot 10 inch beam, a large cabin with 5 foot 4 inch headroom, well fitted out for cruising and fishing. Fittings

include toilet, sink and cooker.

Construction

The hull is very strongly constructed with 3/8 5 ply marine plywood on sawn pressure treated tanned white pine frames, and the normal quota of stringers. The



"Contessa III" - back at the Motuoapa Bay Marina after a week-ends fishing on the Lake.

entire hull, decks and coach roof are epiglass covered. The whole interior is treated with everdure to seal out water and moisture. The whole boat is craftsman built of the best materials available.

Power Unit

"Contessa III" was fitted with one of the very early 80hp Volvo Penta Motors and Stern Drive, reaching a speed of 25 m.p.h. full out, with comfortable cruising speed of 20 m.p.h.

Motor Change

In 1970 the 80hp Motor and drive were replaced with the latest 130hp Volvo and Stern Drive with Power Trim. This increased the speed to 34 m.p.h. when conditions were suitable.

Safety Equipment

The safety equipment includes Depth Sounder, Radio Telephone, 6 Life Jackets and Fire Extinguisher.

Auxiliary Motor

The auxiliary motor is a 8hp Johnson.

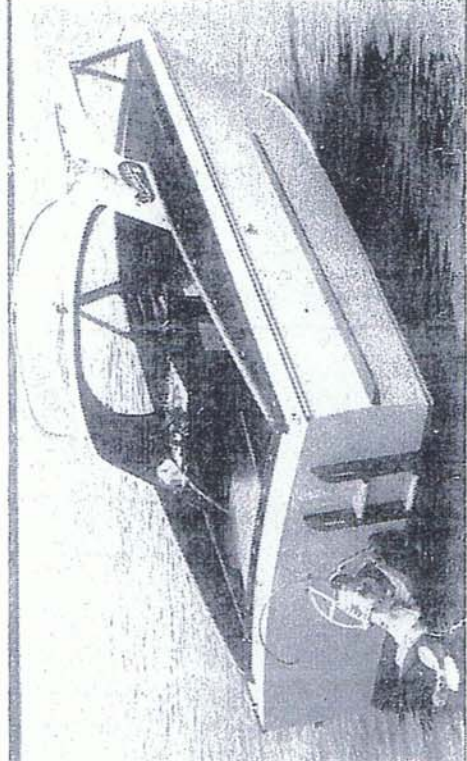
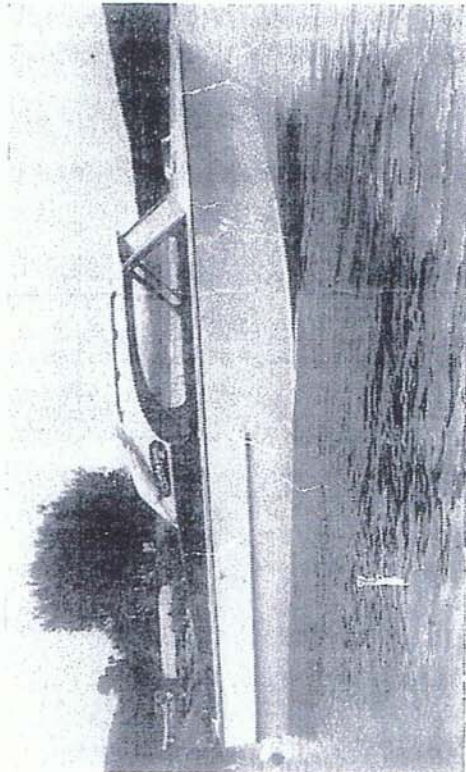
Apart from one holiday cruise to the Marlborough Sounds "Contessa III" has spent all her time on Lake Taupo. When not in use "Contessa III" is stored in a boat shed. She is in pristine condition, maintained that way since new.

The FLEETCRAFT

"Voyager 21"

A New Boat with a New Look

The Voyager 21 is the latest addition to the Fleetcraft range. The roominess and cabin height of this craft make it a favourite for the boating holiday afloat. The distinctive Fleetcraft look has been preserved and so have the rugged construction and superb finish typical of all Fleetcraft boats. The 21ft. Voyager can be finished to any desired specification and to any stage of construction from the hull only to a finished boat ready to go.



Vital Statistics:

Length 21ft. Beam 7ft. 10in. Cabin Height 5ft. 4in.

PRICE FOR HULL AND CABIN UNPAINTED AND WITHOUT INTERNAL FITMENTS.

£525